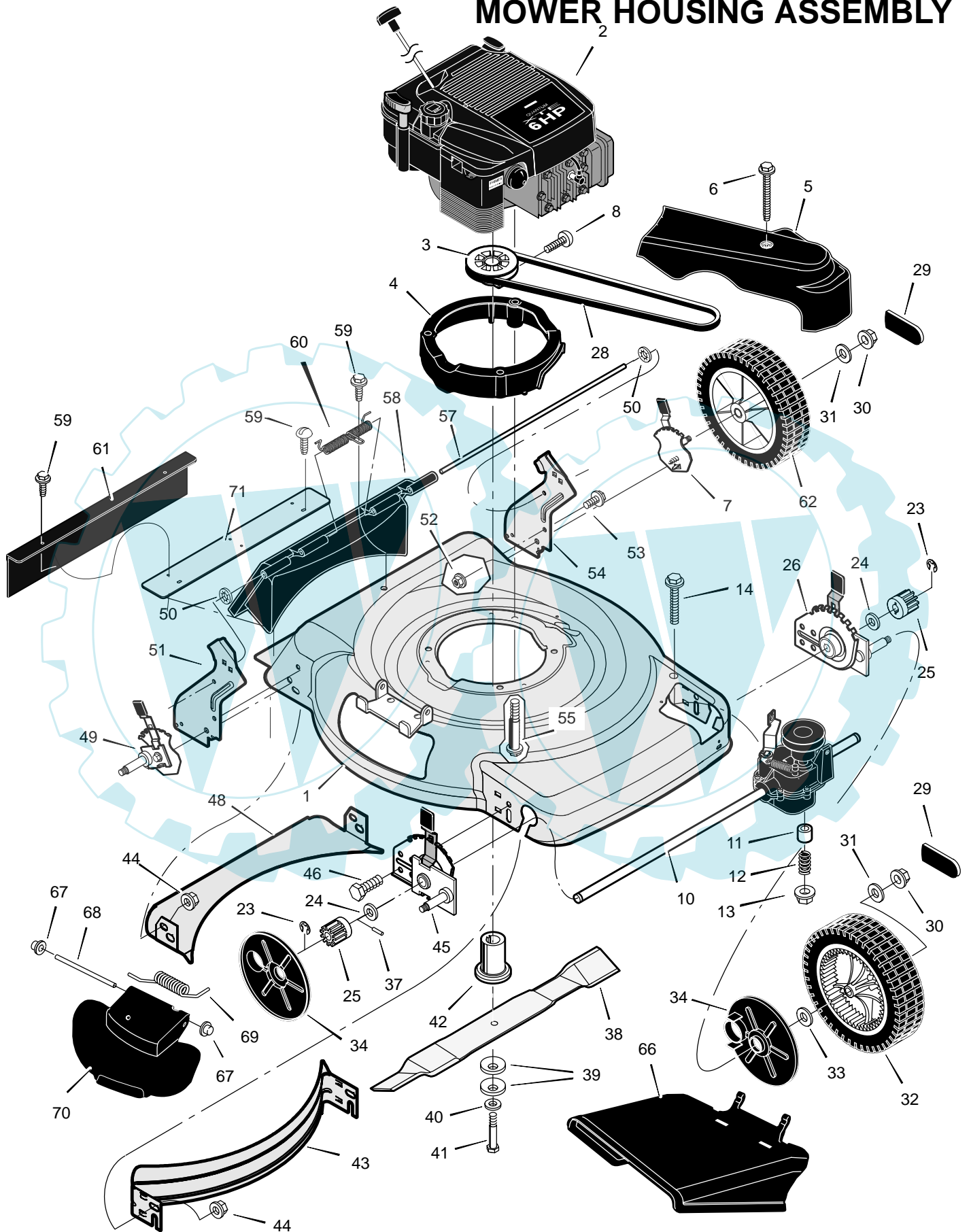


228610x50A

MOWER HOUSING ASSEMBLY



228610x50A

MOWER HOUSING ASSEMBLY

Key No.	Description	Part No.	Key No.	Description	Part No.
1	Housing	1101616E245	40	Washer	17x124
2	Engine *	-----	41	Bolt	01x144
3	Pulley, Drive	1101653	42	Adapter, Blade	1101336
4	Spacer, Engine (Gray)	1101332	43	Baffle, Front **	672915E701
5	Cover, Belt (Gray)	1101568	44	Nut, Flange	015x68
6	Screw	26x304	45	Adjuster, Right Front Height	1101028
7	Adjuster, Left Rear Height	672605	46	Bolt	001x85
8	Screw	26x303	48	Baffle, Rear **	672916E701
10	Transmission – Note: There are no internal serviceable parts for the transmission.	1101571	49	Adjuster, Right Rear Height	672604
11	Spacer	043844	50	Push On Cap ***	028x49
12	Spring, Compression	164x27	51	Bracket, Right Handle	1101238E245
13	Nut	015x88	52	Nut, Flange	015x79
14	Bolt	01x156	53	Bolt	001x45
23	E-Ring	0011x16	54	Bracket, Left Handle	1101239E245
24	Washer	17x186	55	Bolt, Engine	025x11
25	Gear, Pinion	071792	57	Rod, Pivot ***	215x21
26	Adjuster, Left Front Height	1101029	58	Door, Rear (Gray)	672613
28	Belt	37x123	59	Screw	26x245
29	Cap, Hub	672122	60	Spring ***	166x44
30	Nut, Flange	015x84	61	Guard, Rear	1101105
31	Washer	17x169	62	Wheel & Tire, Rear	071132
32	Wheel & Tire, Drive	071133	66	Deflector, Chute (Gray)	672917
33	Washer	017x75	67	Push On Cap	028x42
34	Cover, Dust	071780	68	Rod, Pivot	215x19 Z
37	Pin, Drive	043629	69	Spring, Torsion	166x38
38	Blade	1101120E701	70	Cover, Mulch (Gray)	672920
39	Washer, Belleville	17x137	71	Extension, Rear	672111E701
			--	Book, Instruction	F-030445L

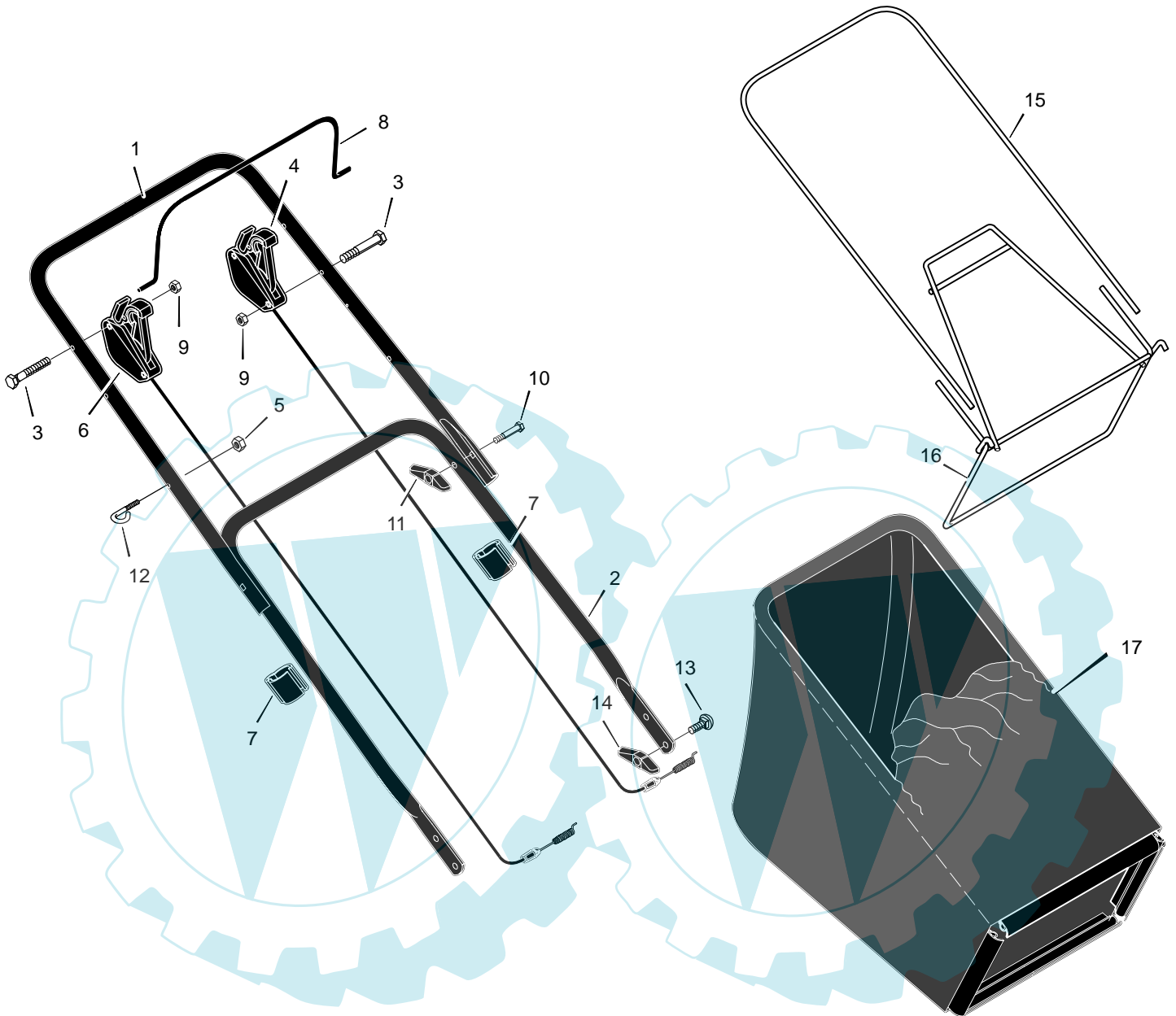
* Parts are available from an Authorized Engine Service Center. See "Engines, Gasoline" or "Gasoline Engines" in the yellow pages of the telephone directory.

** Included with Housing, Key No. 1.

*** These part are included with Key 58.

228610x50A

HANDLE & BAG ASSEMBLY



Key No.	Description	Part No.	Key No.	Description	Part No.
1	Handle, Upper	1101613E724	10	Bolt	002x77
2	Handle, Lower	672906E724	11	Knob	071294
3	Bolt	26x307	12	Guide, Rope	071530
4	Control, Drive	1101676	13	Bolt, Carriage	002x81
5	Locknut	15x116	14	Knob, Plastic	071495
6	Control, Starter	1101611	15	Tube, Bag	1101075
7	Fastener, Cable	1101353	16	Frame Assembly	1101074
8	Lever, Stop	1101612E701	17	Bag, Cloth	1101614
9	Nut	15x142			